

Gas Products

from our trusted partners



+GF+



GAS UTILITY SOLUTIONS

TRIDENT SOLUTIONS®



Offered By



HUGH M. CUNNINGHAM COMPANIES

THE MANUFACTURER'S REPRESENTATIVE
A BUILDING PRODUCTS COMPANY
SOUTH CENTRAL USA

Tracer Wire



Risers



Con Stab Fittings



Butt Fusion



Regulators





DESCRIPTION:

BigGuy® riser options are available for a variety of residential and commercial gas applications. Risers offer a safe and simple method for connecting and transitioning from the PE pipe below the ground to the above ground piping system.



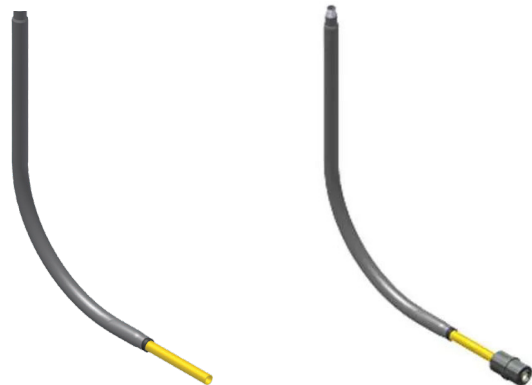
Anodeless Risers

Item No.	Pipe Size MPT	Vertical Dimension	Con-Stab Coupling
A3434	3/4"	24"	No
A3430	3/4"	30"	No
A3436	3/4"	36"	No
A124	1"	24"	No
A130	1"	30"	No
A11430	1-1/4"	30"	No
A11436	1-1/4"	36"	No
A11230	1-1/2"	30"	No
A11236	1-1/2"	36"	No
A230	2"	30"	No
A236	2"	36"	No
A3430C	3/4"	30"	Yes
A130C	1"	30"	Yes
A11430C	1-1/4"	30"	Yes
A11236C	1-1/2"	36"	Yes

Available in additional sizes.

FEATURES:

- Epoxy Coated Steel Casing is electrostatic bonded coating providing long-term underground corrosion protection.
- Casing is TIG welded to adapter for a stronger and higher quality welder joint.
- Every part is leak tested.
- Meets or exceeds all ASTM 02513 Category 1 and NFPA-58 requirements.
- Available with Con-Stab coupling attached.



Gas Products

Risers

DESCRIPTION:

BigGuy® riser options are available for a variety of residential and commercial gas applications. Risers offer a safe and simple method for connecting and transitioning from the PE pipe below the ground to the above ground piping system.



Conflex Risers

Item No.	Pipe Size MPT x IPS	Vertical Dimension
F1236	1/2" x 1/2" CTS	36"
F3436	3/4" x 3/4"	36"
F136	1" x 1"	36"
F11436	1-1/4" x 1-1/2"	36"
F11236	1-1/2" x 1-1/2"	36"
F236	2" x 2"	36"

Available in additional sizes.



FEATURES:

- Easy confirm to trench depth and flex with ground movement.
- Swivel feature allows easy tightening.
- Adapter is integral to the design to eliminate loose components.

Transition Risers

Item No.	Pipe Size MPT	Vertical Dimension
T3424	3/4"	24"
T3436	3/4"	36"
T124	1"	24"
T136	1"	36"
T114124	1-1/4" x 1"	24"
T11424	1-1/4"	24"
T11436	1-1/4"	36"
T11224	1-1/2"	24"
T224	2"	24"
T236	2"	36"
T336	3"	36"



FEATURES:

- Strong transition joint is stronger than PE Pipe installed.
- Utilizes O-ring design for added protection.
- Protected with electrostatically applied, fusion-bonded epoxy powder coating specifically designed for gas applications.

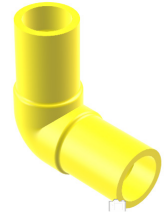
DESCRIPTION:

BigGuy® provides a wide range of gas distribution fittings designed to meet diverse gas application requirements.



Butt Fusion Fittings

- Requires specialized heating equipment to melt and fuse the pipe ends together, creating a monolithic, homogeneous joint
- Ideal for long, continuous, high-pressure natural gas or LPG distribution lines
- Creates a very strong joint that is commonly used for applications that require 100 psi pressure
- Available in a large variety of fitting types and sizes



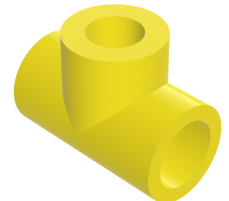
ElectroFusion Fittings:

- Specialized fittings with embedded coils that create heat when powered, melting the pipe from the inside
- Allows pipes with different wall thicknesses and varying diameters to connect
- Often used for repair and maintenance projects and easier to use in confined spaces



Socket Fusion Fittings:

- Heats the outside of the pipe and inside of a fitting using a portable heating iron, then inserting the pipe into the fitting
- Used with smaller, nominal pipe sizes (typically 4 inches or less)
- Ideal for confined spaces like narrow trenches or indoor installations where large machines cannot fit



Saddle Fusion Fittings:

- Concave base of saddle fitting is heated to a matching area on the side-wall of the main gas pipeline
- Primary used to install a branch outlet from the top or the side of an existing gas pipeline
- Enables "hot tapping," allowing a new service line to be added to a pressurized gas main without disruption



Gas Products

Constab Fitting and Tools

DESCRIPTION:

BigGuy® offers gas distribution fittings designed by Con-Stab-ID Seal® which allows for a seal to be maintained on the inside surface of a polyethylene pipe. These fittings offer a simple, cost-effective joining method, with no additional equipment requirements and uni-body design to eliminating all external parts.



Con-Stab Chamfer Tool

Item No.	PE Size	Test Gauge
0000-33-6580-04	1/2" CTS	Yes
0000-33-6580-13	3/4" IPS	Yes
0000-33-6580-14	1" IPS	Yes
0000-33-6580-10	1-1/4" IPS	Yes
0000-33-6580-16	1-1/2" IPS	Yes
0000-33-6580-17	2" IPS	Yes



Con-Stab Tee

Item No.	PE Size
3259-50-1004-00	1/2" CTS
3259-50-1013-00	3/4" IPS
3259-50-1014-00	1" IPS
3259-50-1015-AA	1-1/4" IPS
3259-50-1016-00	1-1/2" IPS
3259-50-1017-00	2" IPS



Con-Stab Coupling

Item No.	PE Size	Wall
3259-52-1013-00	3/4" IPS	SDR-11
3259-52-1014-00	1" IPS	SDR-11
3259-52-1015-AA	1-1/4" IPS	SDR-11
3259-52-1016-00	1-1/2" IPS	SDR-11
3259-52-1017-00	2" IPS	SDR-11



Con-Stab Elbow

Item No.	PE Size
3259-51-1004-00	1/2" CTS
3259-51-1013-00	3/4" IPS
3259-51-1014-00	1" IPS
3259-51-1015-AA	1-1/4" IPS
3259-51-1016-00	1-1/2" IPS
3259-51-1017-00	2" IPS



Con-Stab Steel Transition Fitting

Item No.	PE Size	With Coupling
4646-00-1904-25	1/2" CTS	No
4646-00-1913-25	3/4" IPS	No
4646-00-1914-25	1" IPS	No
4646-00-1915-25	1-1/4" IPS	No
4646-00-1916-25	1-1/2" IPS	No
4646-00-1917-25	2" IPS	No
101051050800	3/4" IPS	Yes
101321320800	1" IPS	Yes
101661660700	1-1/4" IPS	Yes
101901900800	1-1/2" IPS	Yes
102382380800	2" IPS	Yes



Please contact your Hugh Cunningham account manager for purchasing and pricing information.

Gas Products

Underground Marking Tape & Wire

DESCRIPTION:

BigGuy® offers both detectable and undetectable warning tape that is for underground utility identification and UL listed tracer wire used for locating buried pipe.



Detectable Tape

Item No.	Color	Marking	Size
D2YG	Yellow	Gas	2" x 1000 FT
D3YG	Yellow	Gas	3" x 1000 FT

FEATURES:

- Manufactured for durability and corrosion resistance.
- Temperature rated from -94°F to 200° F.
- Triple - layer lamination.
- 5.0 mil thickness.



UL Listed Flexible Tracer Wire

Item No.	Color	Size
APSS-1801-4-YP4-HC	Yellow	500 FT
APSS-1801-4-150-HC	Yellow	150 FT

Available in additional sizes.

FEATURES:

- Available in 8 to 18-gauge AWG copper clad steel.
- PE insulated with a .030" nominal wall.
- UL listed for direct burial applications.
- Strong durability and corrosion resistance.



Please contact your Hugh Cunningham account manager for purchasing and pricing information.

PCP-CAT006G-04012026 © 2026 PCP – All Rights Reserved



Gas Products

Pipe

DESCRIPTION:

BigGuy® medium-density polyethylene Yellow Gas Pipe is used for a variety of natural gas distribution applications. Available in 1/2-inch to 6-inch diameters, it comes a several coil lengths and can be installed by heat fusion or mechanical fittings.



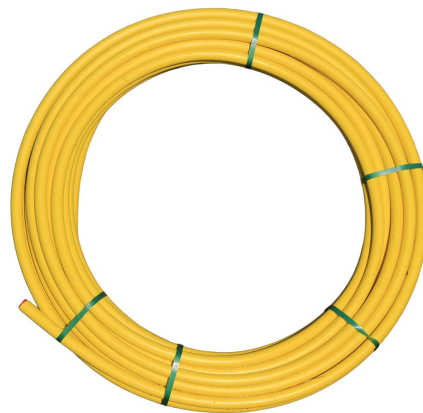
Yellow Gas Pipe Coil

Nominal Size	Feet/ Coil
3/4"	150'
	500'
1"	150'
	250'
	500'
1-1/4"	150'
	500'
1-1/2"	150'
	500'
2"	20' sticks
	150'
	250'
	500'
3"	20' sticks
	250'
	500'
4"	20' sticks
	500'
6"	20' sticks

Available in additional sizes.
Some sizes shown are special order.

FEATURES:

- Flexible polyethylene pipe produced from finest medium density virgin material.
- Is non-corroding against gas and external galvanic soil conditions.
- Resists UV degradation when exposed to direct sunlight.
- Can be cut with simple pipe and tubing cutters, allowing for savings in labor and equipment.
- Reduces the cost of manpower required for installation due to its light weight and ease in transport and handling, as well as long laying lengths.



DESCRIPTION:

BigGuy® Gas Regulators provide pressure stability and are available in models appropriate for various applications, including commercial and industrial, mid-range commercial and industrial, and residential.



P140 Model

Item No.	Port	WC	Orifice	Relief Settings
P140R040016963F	1/2"	6-16"	3/8"	9" above set point
P140R040016993F	1/2"	6-16"	1/2" x 9/16"	9" above set point
P140R060002983F	3/4"	-	1/2"	9" above set point
P140R060016943F	3/4"	6-16"	1/4"	9" above set point
P140R060016963F	3/4"	6-16"	3/8"	9" above set point
P140R060016983F	3/4"	6-16"	1/2"	9" above set point
P140R060016993F	3/4"	6-16"	1/2" x 9/16"	9" above set point
P140R080016923F	1"	6-16"	1/8"	9" above set point
P140R080016943F	1"	6-16"	1/4"	9" above set point
P140R080016963F	1"	6-16"	3/8"	9" above set point
P140R080016983F	1"	6-16"	1/2"	9" above set point
P140R080016993F	1"	6-16"	1/2" x 9/16"	9" above set point
P140R120016963F	1-1/4"	6-16"	3/8"	9" above set point
P140R120016983F	1-1/4"	6-16"	1/2"	9" above set point
P140R120016993F	1-1/4"	6-16"	1/2" x 9/16"	9" above set point



FEATURES:

- Used for water heaters, pool heaters, IR heaters and generators
- Compact design and NPT connection with straight and angle body options
- Relieving and non-relieving option

P302 Model

Item No.	Port	WC	Orifice
P3020140140B3F0	1-1/2"	6-14"	3/4"
P3020160140B3F0	2"	6-14"	3/4"
P302H160050B3F0	2"	2.5-5"	3/4"

FEATURES:

- Minimizes sudden downstream "shock" load changes
- Wide pressure range
- Internal relief valve for overpressure protection
- Used on commercial applications



More regulators available to meet your application needs

Please contact your Hugh Cunningham account manager for purchasing and pricing information.

PCP-CAT006G-04012026 © 2026 PCP - All Rights Reserved



Gas Products

Regulators

DESCRIPTION:

BigGuy® Gas Regulators provide line pressure and appliance gas stability and are available in models appropriate for a variety of residential and light commercial applications.

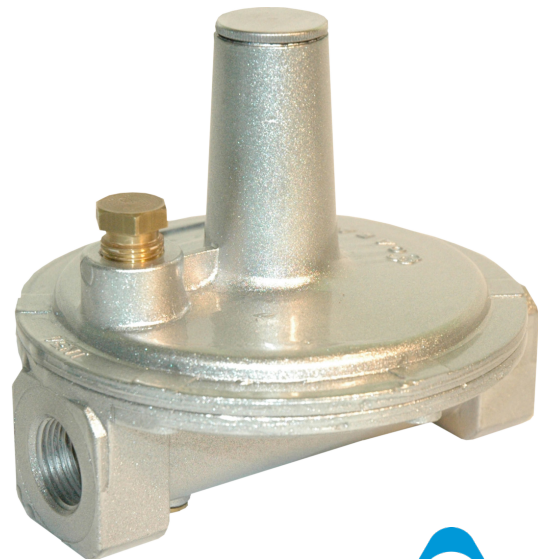


Regulators - 1/2" and 3/4" Pipe Size

Model	Description
4411900002	1/2" Natural Gas Line Pressure, 2 PSI
4411900004	1/2" Propane Gas Line Pressure, 2 PSI
4412900002	3/4" Natural Gas Line Pressure, 2 PSI
4412900003	3/4" Propane Gas Line Pressure, 2 PSI
4412900025	1" Natural Gas Line Pressure, 2 PSI
4412900026	1" Propane Gas Line Pressure, 2 PSI

FEATURES:

- Line pressure and gas appliance regulator for inlet pressure up to 2 PSI.
- Precise regulating control of both full flow and lower pilot flows of gas.
- Available in natural gas and propane gas models.
- Includes a vent limiter made of brass required for indoor use and spaces where gas escapement requirements are in place.
- Housing made of rugged die-cast aluminum.
- Diaphragm and washer made of combustible gas resistant Nitrile Rubber.



Please contact your Hugh Cunningham account manager for purchasing and pricing information.

PCP-CAT006G-04012026 © 2026 PCP - All Rights Reserved

PreferredConstructionProducts® represented by



HUGH M. CUNNINGHAM COMPANIES

THE MANUFACTURER'S REPRESENTATIVE
A BUILDING PRODUCTS COMPANY
SOUTH CENTRAL USA



HUGH CUNNINGHAM.COM
800.339.0191

GENERAL OFFICES – BEEHIVE
REGIONAL DISTRIBUTION CENTER – DFW
2029 WESTGATE DRIVE, SUITE 120
CARROLLTON, TX 75006

SAN ANTONIO
WAREHOUSE ANNEX
4960 EISENHOWER ROAD, SUITE 100
SAN ANTONIO, TX 78218

HOUSTON
WAREHOUSE ANNEX
7436 FAIRBANKS N. HOUSTON RD.
HOUSTON, TX 77040

